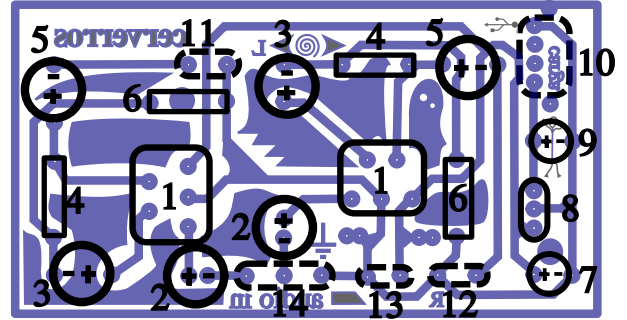
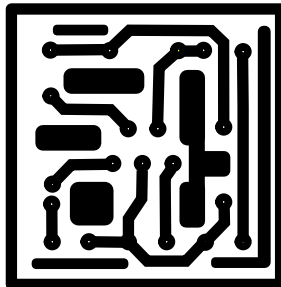
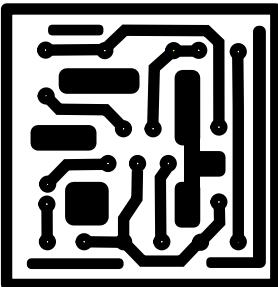
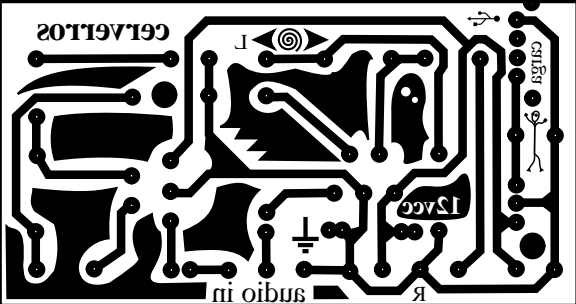
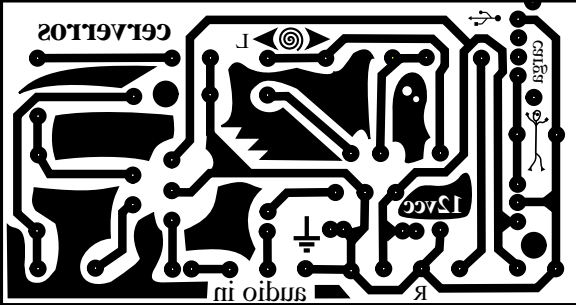
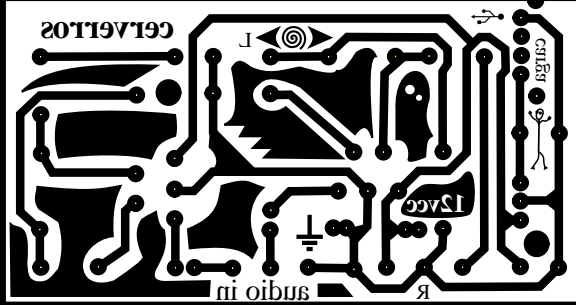


# Klavijador 2.1



- 1: tda2003
- 2: condensador 10 $\mu$ F 25V
- 3: condensador 470 $\mu$ F 35V
- 4: resistencia 220 $\Omega$  1/4W
- 5: condensador 1000 $\mu$ F 35V
- 6: resistencia 2.2 $\Omega$  1/4W
- 7: condensador 0.33 $\mu$ F
- 8: componente 7805
- 9: condensador 0.1 $\mu$ F
- 10: conector USB hembra
- 11: conexión altavoz izquierdo
- 12: conexión altavoz derecho
- 13: alimentación 12vcc
- 14: conexión entrada audio estéreo

